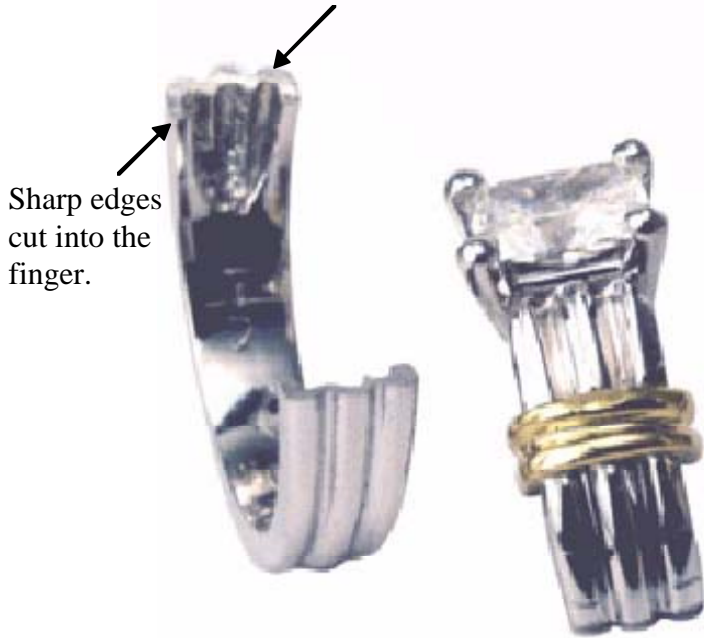


“Nothing to cut on the L.P. Clasp”

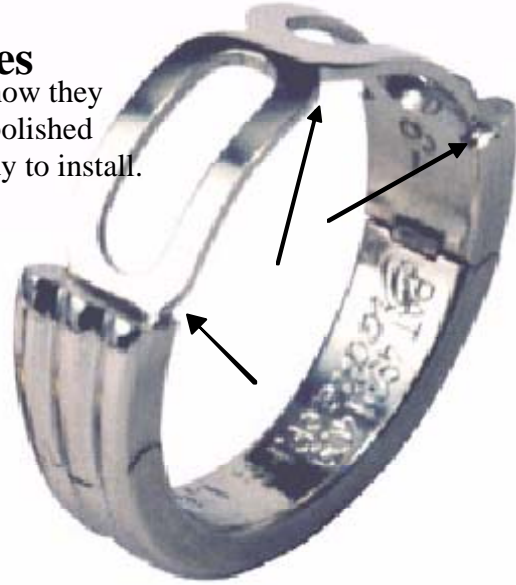
L.P. (Low Profile) PFF Clasp adapted to an existing ring without cutting the clasp.

You can see the back of this ring was hollow. But after installation the ring has a beautiful inner lining due to the finished bezel on these clasps, the fit is much more comfortable also.

Original shank removed.
You can see the hollow construction.



Yes
This is how they come, polished and ready to install.



In this case the clasp was carved to match the original shank.

