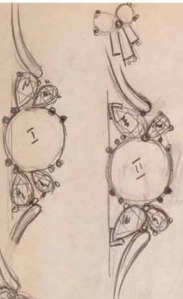


This way will
won't touch.



- 1 - tapered prongs.
- 2 - conical shape to seat flairs
- 3 - frosted belt
- 4 - claws with more space between

This gives the total package.



cabt just peeking through.
+ 3mm. over the finger.

2 facets on belt.
add flairs
1.6mm

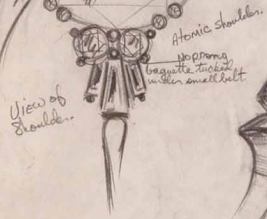
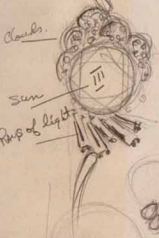


This is the
appear so
they don't touch

1.2mm dia.
Platinum wire

taper only from
the belt down
to retain max. strength

Clouds.



VII
View of shoulder
with 1 pear shape.



Boxy
Poor work,
COMMON

No FLAIR
No ELEGANCE

Prongs too close.
Not tapered.

Looks like 4 telephone poles.

Sculpted shank
with edge oriented
to receive the pear.

2/6